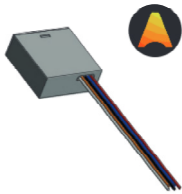


**Bluetooth 4CH push button interface**  
Add any push button to your network

**Warning!**  
Only qualified professionals should make the connections



**Description**

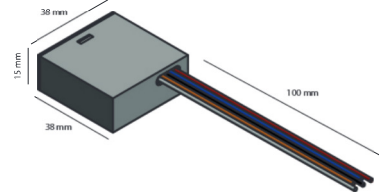
This interface is designed to connect any "normal open" push button to a casambi network. Powered by a battery the interface doesn't need more cabling than the wires between the interface and the push buttons. 1 to 4 push buttons can be used and they can be configured in the app to control a lamp, a group of lamps, a scene/animation or just control all lamps in one press.

The box is small enough to fit any wall box and the wires are a size that will fit any screw terminal. The interface is compatible with all products that are compatible with the casambi bluetooth network.

Each time a button is pressed the module will be activated for a few seconds and then goes automatically in a standby mode. This in order to preserve the battery capacity. Battery status can be checked in the app on the 'switches' screen.

To ensure a long battery life this interface will not be active in the bluetooth mesh the whole time. You can't use this as a mesh 'repeater'

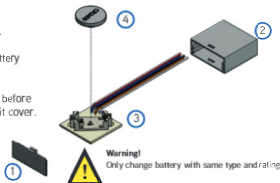
**Dimensions**



**Battery replacement**

When battery indicator is showing a low level a new battery will be needed. Battery is available as spare part

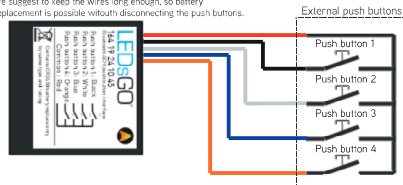
- Remove the cover (1) from the box (2).
- Pull out the pcb (3) slowly until the battery (4) can be removed.
- Replace battery and assure it is locked before sliding the pcb back in and putting the lid cover.



**Connection diagram**

Wires connected to the external push buttons

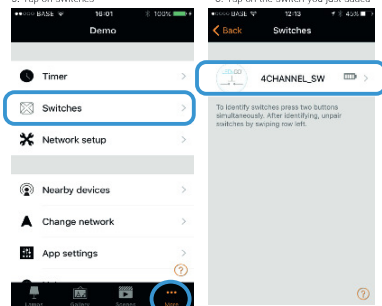
We suggest to keep the wires long enough, so battery replacement is possible without disconnecting the push buttons.



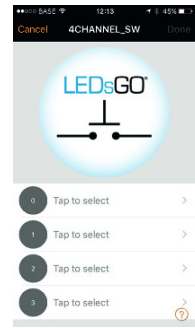
**Setup your push button interface**

Follow these simple steps to configure your device into a network.

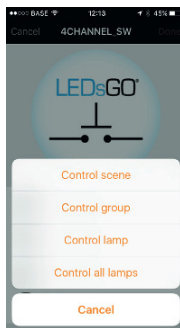
1. Open the casambi app and login to your network. If you do not have a network yet we recommend to configure the casambi ready output module first. By this you will generate a network.
2. Power up the push button interface by continuous pressing on any button you want. For example connect red on black wire with each other. By doing this the module will start. You can now find the modules in the "nearby devices" screen.
3. Tap on the switch icon and add the device to the desired network.
4. Now the device is added to the network you can add functions to the buttons. Open up the 'more' screen.
5. Tap on switches.
6. Tap on the switch you just added.



7. You will see an overview of the buttons

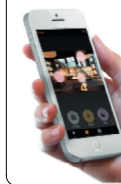


8. choose the function for the button



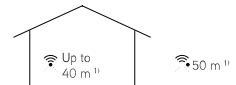
**Casambi App**

The must have app for configuring casambi ready products



Compatible devices:  
iPhone 4S or later  
iPad 3 or later  
iPod Touch 5th gen or later  
Android 4.4 KitKat or later devices  
produced after 2013 with full BT 4.0 support

**Range**



Casambi uses mesh network technology so each output module acts also as a repeater. Longer ranges can be achieved by using multiple casambi ready output units.

<sup>1)</sup> Range is highly dependent on the surrounding and obstacles, such as walls and building materials.

**Technical data**

|                                     |  |                        |
|-------------------------------------|--|------------------------|
| <b>Power</b>                        |  |                        |
| Battery type                        |  | CR2450 - 3V            |
| <b>Push button input</b>            |  |                        |
| Max. current:                       |  | 0.2 mA                 |
| <b>Radio transceiver</b>            |  |                        |
| Operating frequencies:              |  | 2.4...2.483 Ghz        |
| Maximum output power:               |  | +4 dBm                 |
| <b>Operating conditions</b>         |  |                        |
| Ambient temperature, ta:            |  | -20...+45°C            |
| Storage temperature:                |  | -20...+75 °C           |
| Max. relative humidity:             |  | 0...80%, non-cond.     |
| <b>Wires</b>                        |  |                        |
| Wire type                           |  | 22AWG                  |
| <b>Mechanical data</b>              |  |                        |
| Dimensions:                         |  | 38 x 38 x 15 mm        |
| Weight:                             |  | 0,05 Kg                |
| Degree of protection:               |  | IP20 (indoor use only) |
| <b>Partnumbers</b>                  |  |                        |
| Bluetooth 4ch push button interface |  | 164 19 24 10 45        |
| Spare battery CR2450                |  | 199 26 01 12 23        |



Drieslaan 6  
8560 Wevelgem (Moorsele)  
Tel: +32 56 42 49 92  
Fax: +32 56 43 57 07  
info@ledsgo.eu - www.ledsgo.eu